

## Whole-Slide Image Analysis for Biomedical Researchers



# 7 Reasons to Use Digital Image Analysis in your Histopathology Research



Conduct quantitative analyses that are **simply not possible manually**.

E.g. counting all cells, statistics about cell-cell connections, accurate measurements, tissue composition, predict mutations from standard stains.



Analyze **more data** to get higher statistical significance.

Evaluate larger ROIs, an entire whole-slide image (WSI) or an entire data set comprising hundreds of WSIs.



**Analyze slides faster:** more data in the same time.

You only have limited time for your research. Use it efficiently and do not waste time on manual evaluations. Analyzing entire data sets takes hours not days.



Analyze slides faster: same data in less time. Be the **first to publish your discovery**. The clock is ticking. Don't let others beat you to the punch.



Increase chances of **getting your paper accepted** by using latest digital technologies and AI.

When scoring manually, reviewers will challenge you and ask why no Digital Image Analysis was used.



**Eliminate Bias**, Inter- and Intra-Observer Variance.

Digital analysis will yield identical results regardless of time and stress. It will not subconsciously change its evaluation criteria over the course of a larger analysis.



**Do not waste your talent** and intelligence on tedious tasks.

Let the computer collect the raw data. You draw the conclusions and focus on complicated cases.






# MICAIA® Overview






The screenshot shows the MICAIA studio 1.3.0 interface. The main window displays a histological slide with a red rectangular region of interest (ROI) and a green line segment. The interface includes a menu bar (File, Slide, Annotations, Selection, View, Stain Unmixing, Help), a toolbar with icons for various functions, and a sidebar with tabs for Analysis, Configuration, General, and Results. The Analysis tab is active, showing a list of annotation classes (inflammation, muscle, connective) and their counts. The Results tab shows a list of slides. The bottom status bar displays the file name, zoom level, and memory usage.

Callouts point to the following components:

- Tool Bar**: Points to the top toolbar.
- Selected Annotation**: Points to the 'connective' annotation class in the 'Annotation Classes' panel.
- Image Analysis**: Points to the main image area showing the ROI and line segment.
- Annotation Classes**: Points to the 'Annotation Classes' panel on the right.
- Workspace**: Points to the 'Slides' panel at the bottom.
- Status Bar**: Points to the bottom status bar.

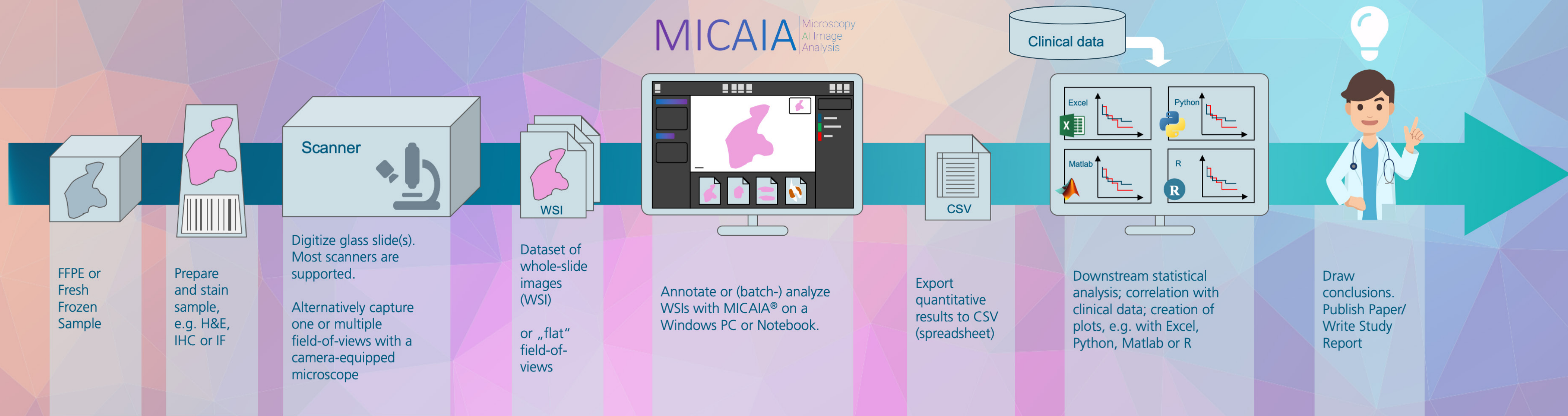
-  Designed for researchers in academia / biotech / pharma
-  Lightweight. Local Windows software. Simple installation. No need to upload WSIs into the cloud
-  Developed specifically for (batch) analysis of whole-slide images

## Addressed Use Cases

-  Annotation & dataset creation
-  Quantitative image analysis of brightfield & immunofluorescence (efficacy studies, ROI detection, hotspotting, cell-cell interactions, ...)
-  Batch-analysis of entire datasets
-  AI Authoring for tissue segmentation
-  App API for plugging in your own AI\*  
\*coming soon



# MICAIA® in Your Workflow







## MICAIA® lite

Available for free download at [www.micaia.ai](http://www.micaia.ai)

- Annotation I/O round-trip with QuPath, Leica, import from 3DHistech. Safe Annotations: undo/redo, auto-save, class presets, ...
- Decentralized annotation storage (in sibling files). Safe to relocate your WSIs at any time.
- Convert and crop any input WSI format to SVS or DeepZoom format.
- Free Apps: Tissue Detection, Tile Export, Annotation-to-Image (new in v1.2: segmentation mask generation)
- Live Stain Unmixing, Density Heatmap, Hotspot Search

## MICAIA® studio

- Additional image analysis Apps
- Coming soon: App REST API for integrating your own AI
- Batch-process entire dataset. Create comprehensive CSV file with all results in one place.
- Fair price
- Distributors:  
[www.smartinmedia.com/micaia](http://www.smartinmedia.com/micaia)  
[www.benestartech.com/micaia](http://www.benestartech.com/micaia)



# The App Center


- Various use-case-specific analysis Apps are available in the App Center and ready to be used off-the-shelf.
- Apps can be filtered by tags HE, IHC, FL or by full text search.
- More Apps will be added in future updates.



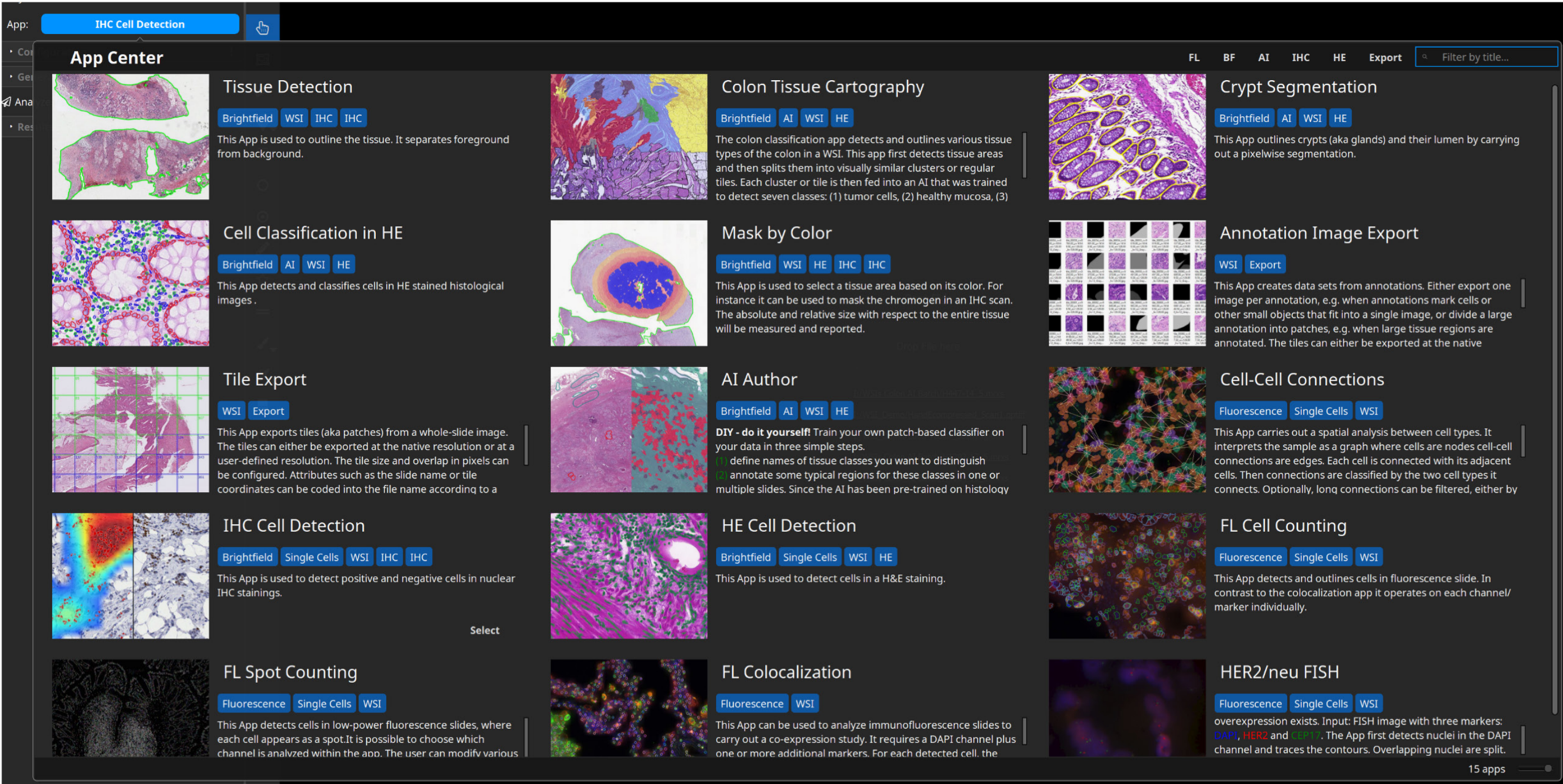
Each App adds annotations to the WSI.  
These can serve as input to the next App.



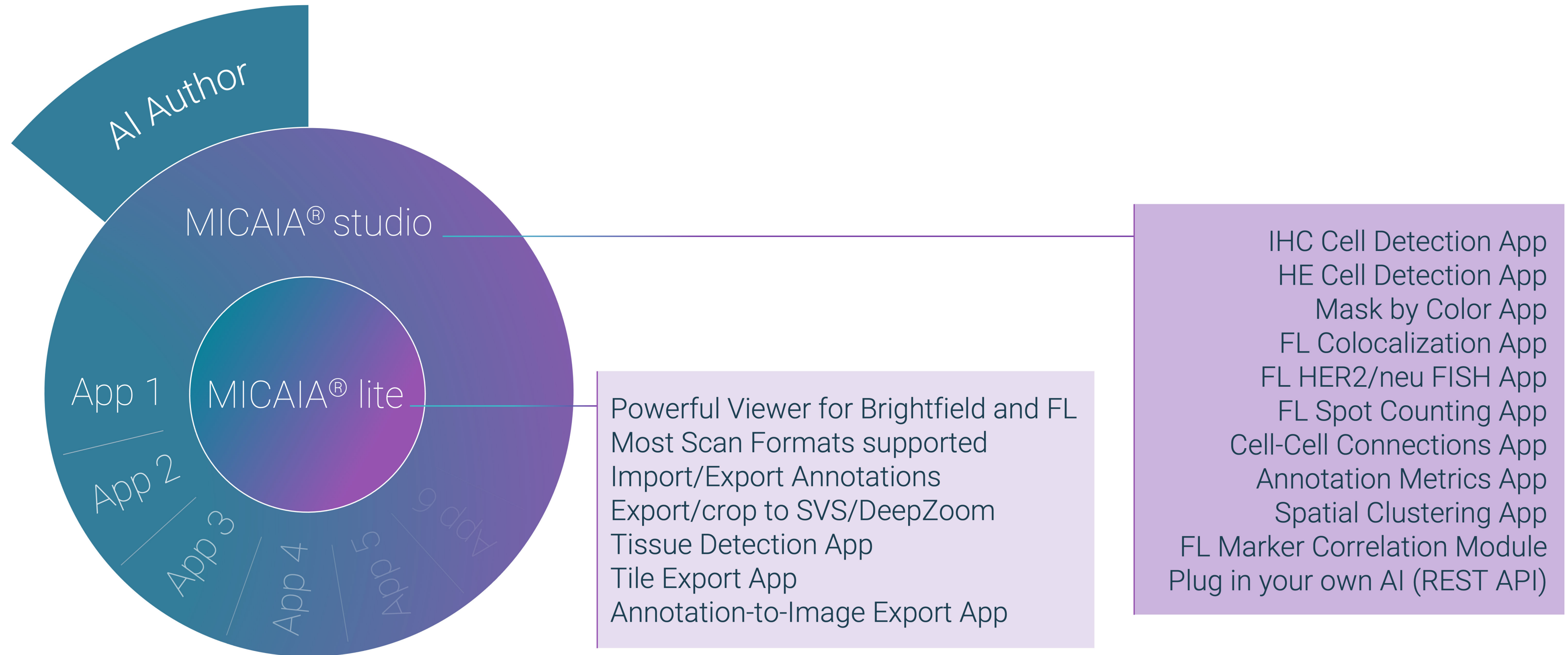
Users can easily add further Apps using the AI Author.  
No technical or AI knowledge required.



Data scientists can plug in their own AIs using a REST API.  
This could e.g. be a Python script residing on the same computer, in a docker or on a network computer











**I can recommend MICAIA® to anyone who wants to step up their research. My PhD students and I use it to analyze various IHC and H&E datasets and extract quantitative data for our publications. MICAIA® is at the sweet spot between ease-of-use and flexibility.«**

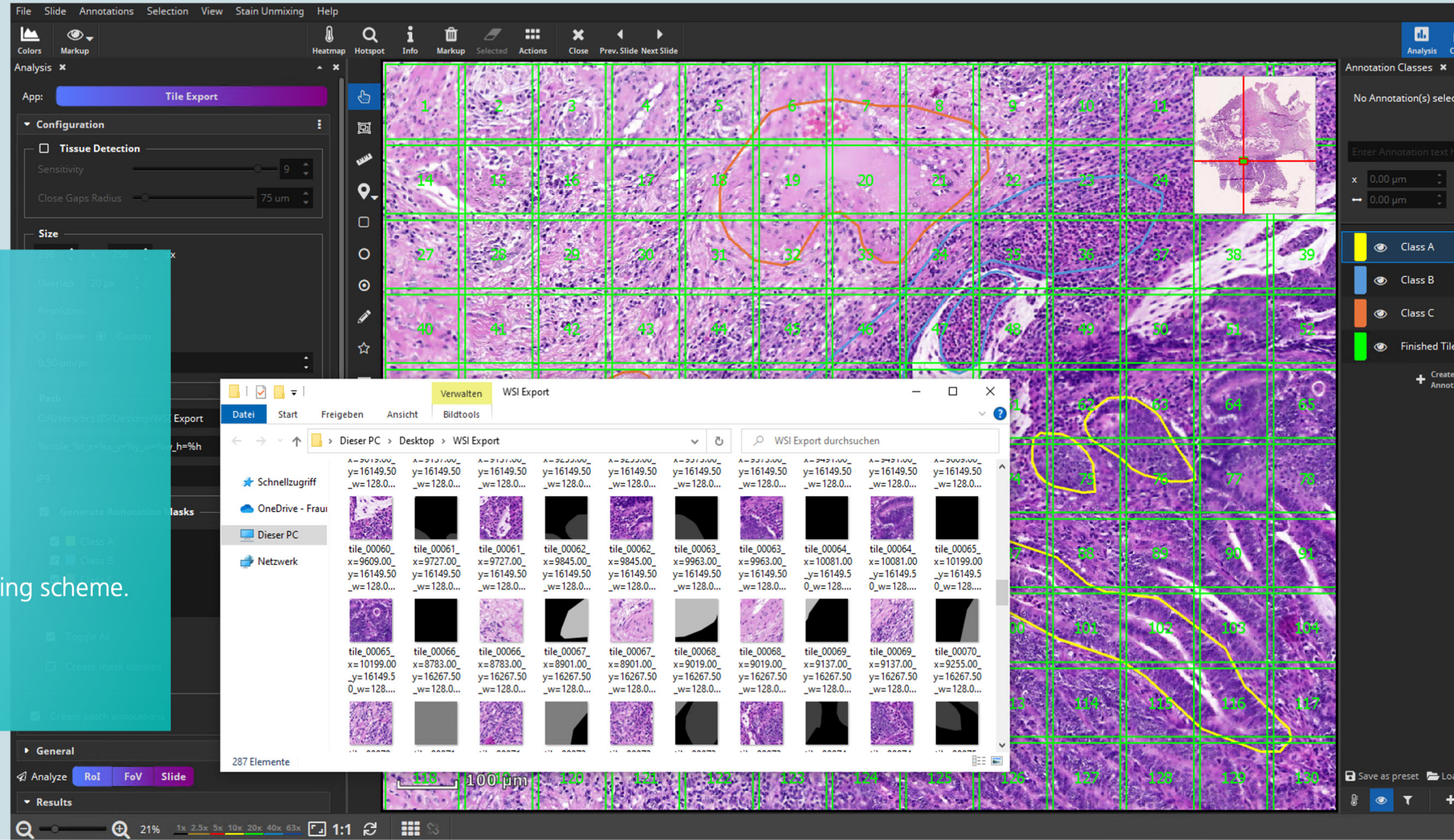
PD Dr. med. Carol-Immanuel Geppert MIAC, Senior Pathologist  
Head of Cytology & Digital Pathology  
University Hospital Erlangen-Nuremberg, Bavaria, Germany



# Don't Waste Time on the first step of every Histo AI Development: **Use MICAIA® to create datasets for AI Training**

## Dataset Creation Workflow

1. Create classes A, B ,C (optionally from template).
2. Annotate by hand or use one of the analysis Apps.
3. Select *Tile Export* app in app center.
4. Set up desired tile size (px), overlap, resolution ( $\mu\text{m}/\text{px}$ ), naming scheme.
5. App will export tiles and segmentation masks to the disk.
6. Train AI outside of MICAIA®.

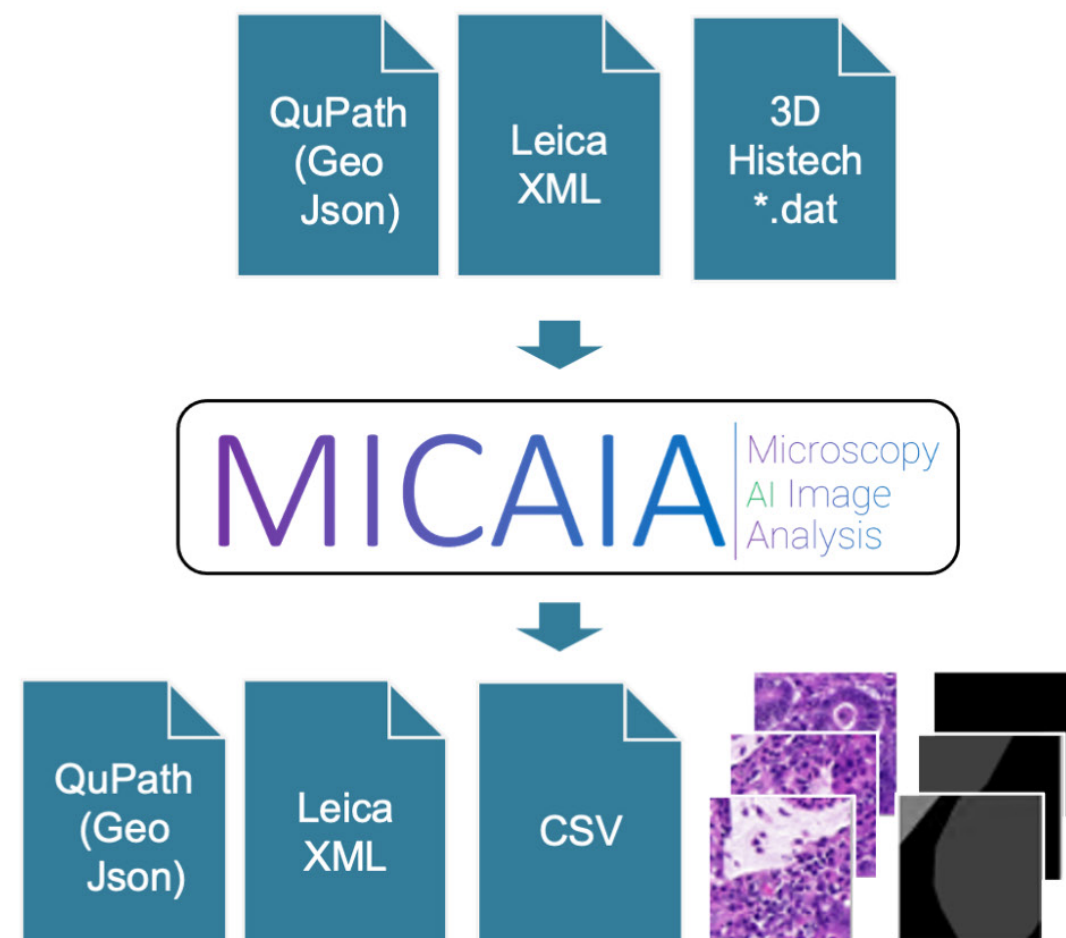




# Create Data Sets

**The right annotation tool can save many hours of work. The wrong tool can cost many hours.**

We have the highest standards when it comes to annotation tools and we use MICAIA® ourselves to annotate training data for our AI models.



## Auto-save

Every few minutes the annotation file is automatically saved in the background. Like you are accustomed to in Microsoft Office Applications: If the software or computer shuts down unexpectedly, the recovery file is detected at the next program start.

## Undo / redo support

You can undo and redo the creation/deletion of annotations. When drawing a large polygon, you can rewind the last segments by clicking the right mouse button and then continue drawing from there.

## Ergonomic Annotation

While drawing with the Pen tool, you can release the mouse button intermittently to rest your finger. If you prefer to draw by clicking at each segment point, that's also possible.

## Navigate while drawing

Sometimes it is necessary to annotate at the highest resolution. Your annotation may soon reach the edge of the current field of view. You can easily navigate with the mouse or keyboard arrows without interrupting the annotations.

## Touch support

You can use a stylus pen on a touchscreen (e.g. a WACOM tablet) for drawing.

## Create Class Presets

Typically you will annotate multiple WSIs and multiple annotators might be involved. Often you end up with different annotation class names, e.g. „Tumor“, „tumor“, „tumour“, „tumor „, and they will sometimes be red, green or blue. In MICAIA® you can simply create a list of annotations classes, configure the appearance of each class and then save this as a preset.

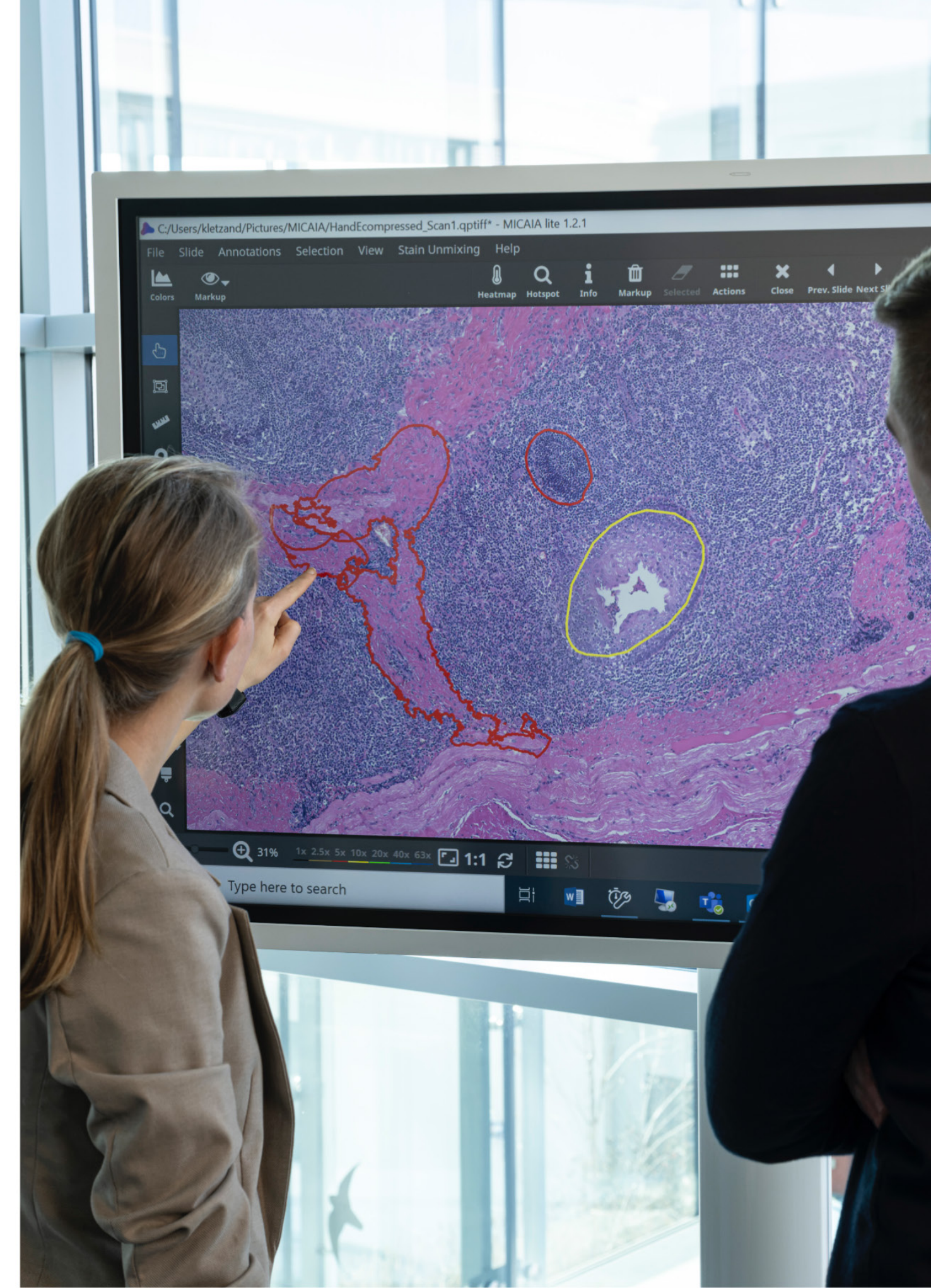
## Smart Annotation

The magic brush and magic eraser support image-content aware annotating. The circular shape will clip to the image content. You can configure the radius and color-tolerance. The brush works well in conjunction with synthetic views, e.g. you can annotate an optical density visualization or the unmixed DAB component of a H-DAB stain.

## Create Cell Datasets

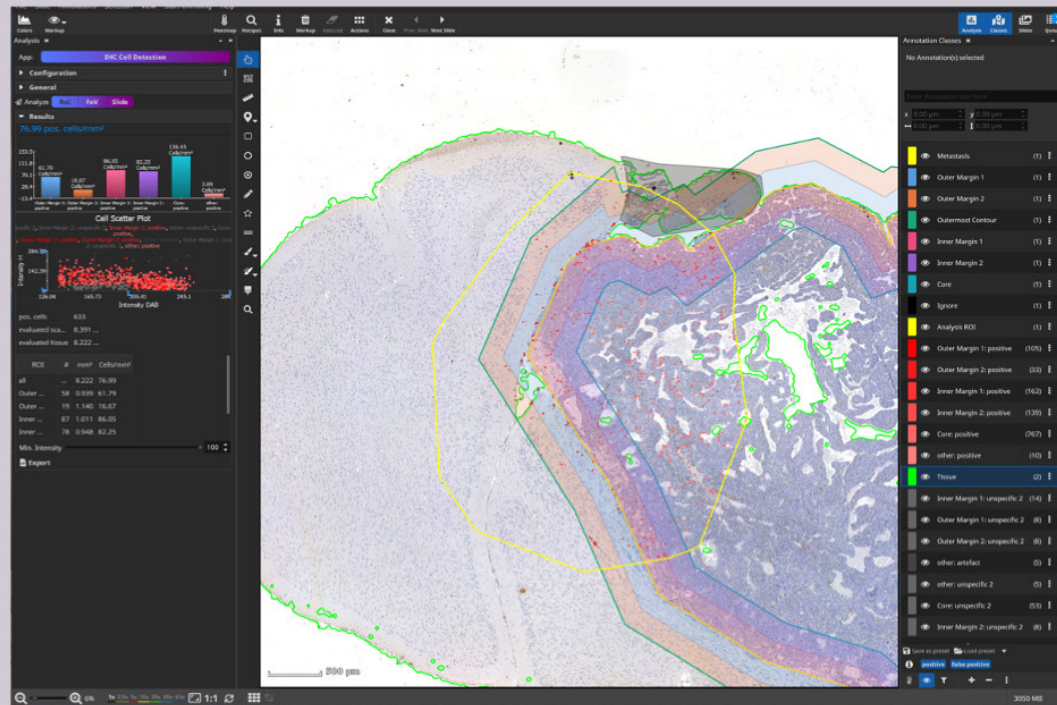
The class label tool is handy to create cell classification datasets.

1. Outline cells using the pen tool, magic brush or HE Cell Detection App.
2. Assign the unlabeled cells to the current class simply by selecting it with the class changer tool.





# IHC Cell Counting App



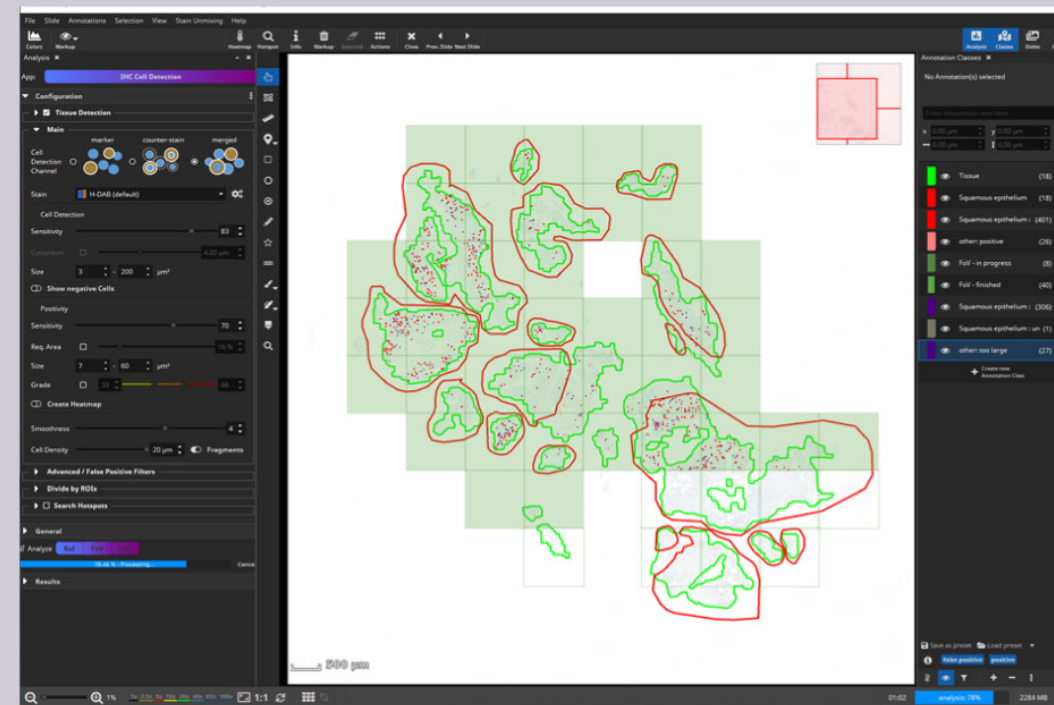
## CD3+ T-Cell analysis in metastasis

Objective: measure T-cell density inside and outside metastasis and near the invasive margin.

1. Annotate metastasis by hand (or with Mask-by-Color App)
2. Used „add margins“ feature to add 2 concentric margins inside and 2 outside, 100  $\mu\text{m}$  diameter each, to cover the tumor micro environment
3. Draw ROI to be analyzed in yellow. Optionally, mark areas to be ignored (here black „ignore“ class). Cells picked up in this area will be discarded
4. Start IHC analysis and select that pos. cells (here CD3) should be grouped by ROI, selecting the 4 margins and metastasis core. The remaining area will be implicitly added as „other“.

In the class side bar, it is visible how pos. cells are divided into six different classes with different shades of red.

The bar diagram shows the cell density in cells/ $\text{mm}^2$  per ROI. Each point in the scatter plot represents one cell. Clicking on a point will center the viewer on the cell. The H- and DAB intensity as well as the size can be plotted.

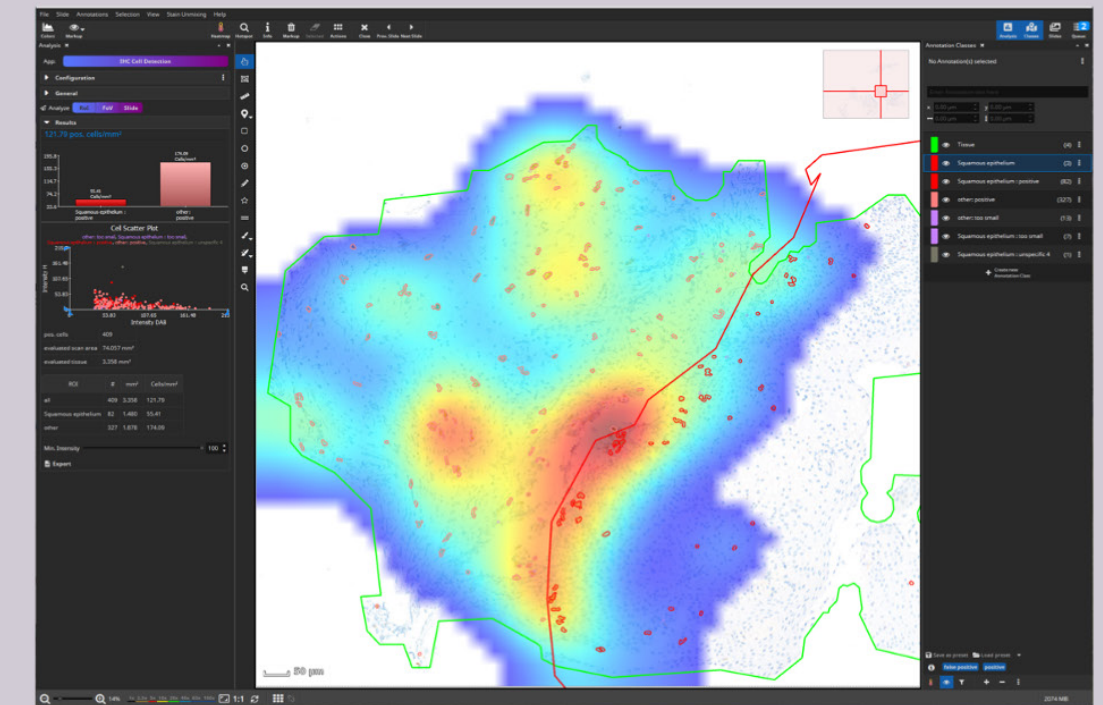


## CD117+ mast cell analysis

Objective: measure mast cell density inside and outside squamous epithelium.

1. Batch-run Tissue Detection App on entire dataset to detect tissue (green). Manually correct, where necessary
2. Manually outline squamous epithelium in all slides (red). Since they will be automatically intersected with the green tissue outline during the analysis, the outlines outside the tissue can be drawn sloppily.
3. Batch-run IHC analysis on entire dataset and configure that pos. cells (here mast cells) should be grouped by ROI, selecting here only the „squamous epithelium“ class.

The above screenshot is taken during the analysis. Green filled tiles have already been analyzed, green unfilled tiles are currently being processed in parallel. Detected positive cells are drawn in shades of red, depending on the ROI they belong to.



Zoom-in on an analyzed slide with CD117 mast cell staining. Detected cells are outlined in red. The density heatmap visualization is activated and shows clusters with a relatively high density of mast cells.

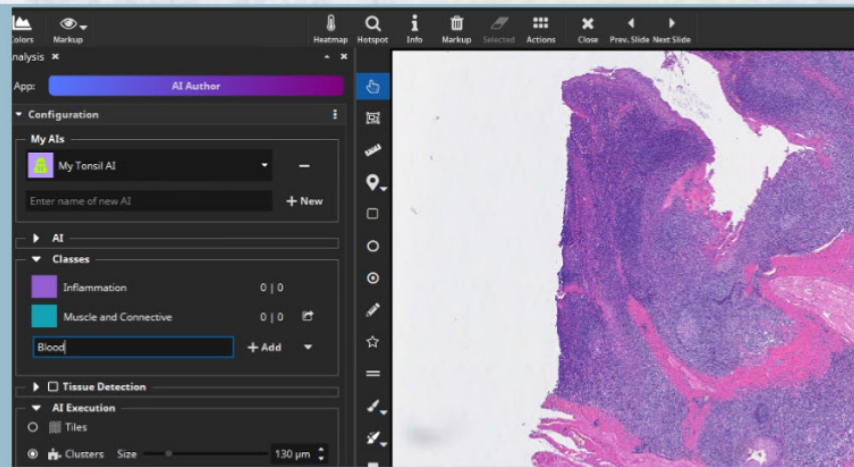


# AI Authoring Workflow

By design, researchers have unique questions they want to answer.

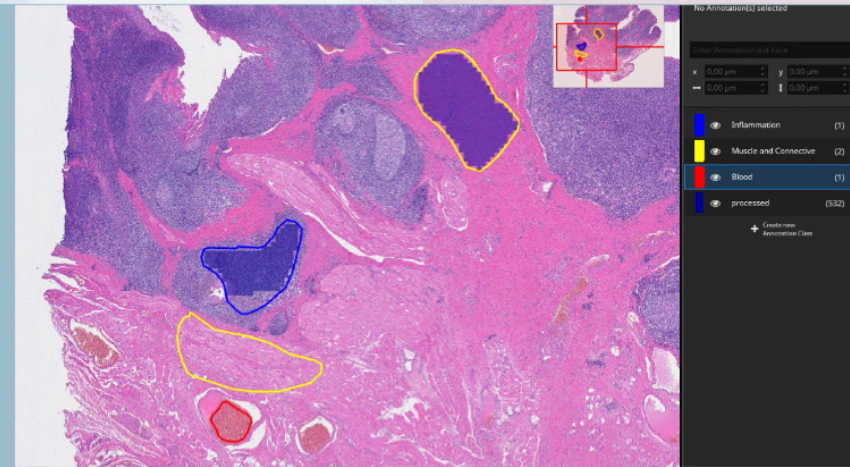
1

Select „AI Author“ App, create new AI, and configure classes (here 3).



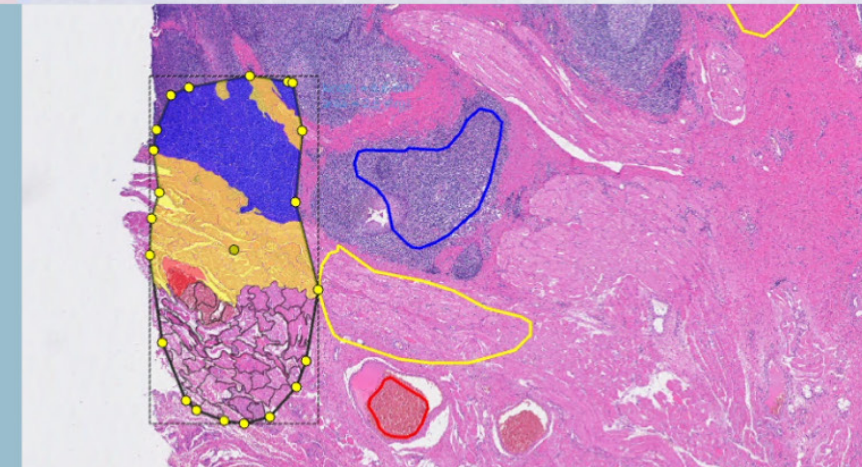
2

Outline example regions for each class and train AI on them. AI will analyze them patch by patch (blue squares).



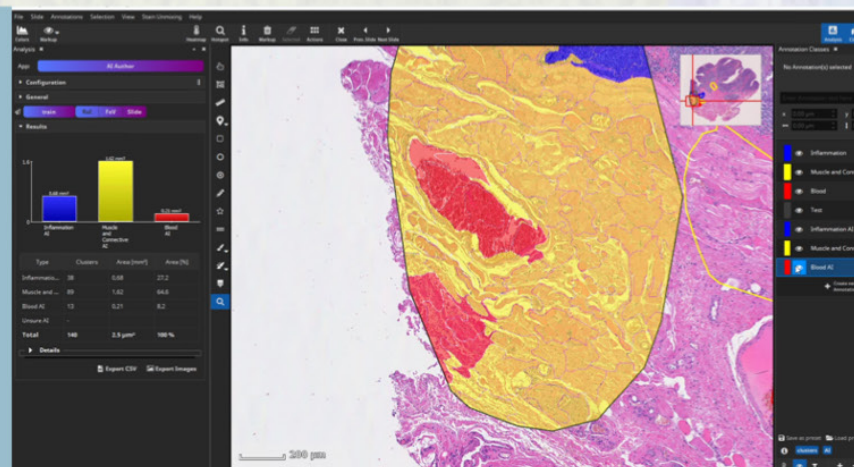
3

Test AI on ROI (black). The ROI is analyzed patch by patch or optionally cluster by cluster.



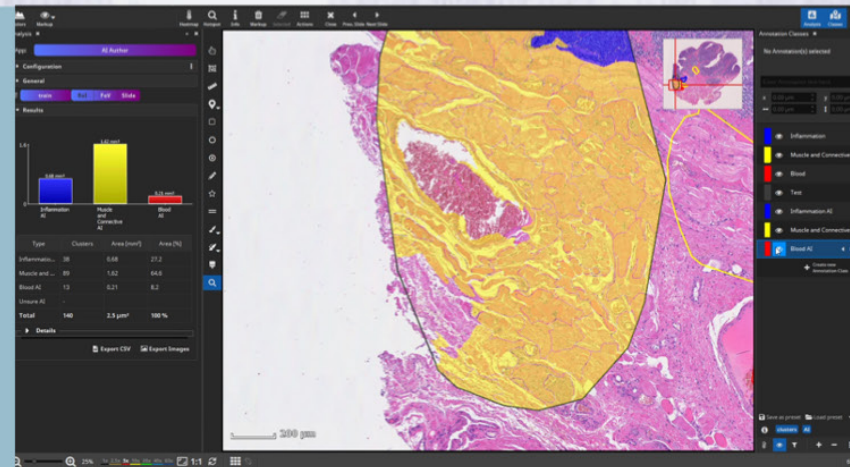
4

Inspect quality of result. Here a region is classified as the red class, but should be yellow.



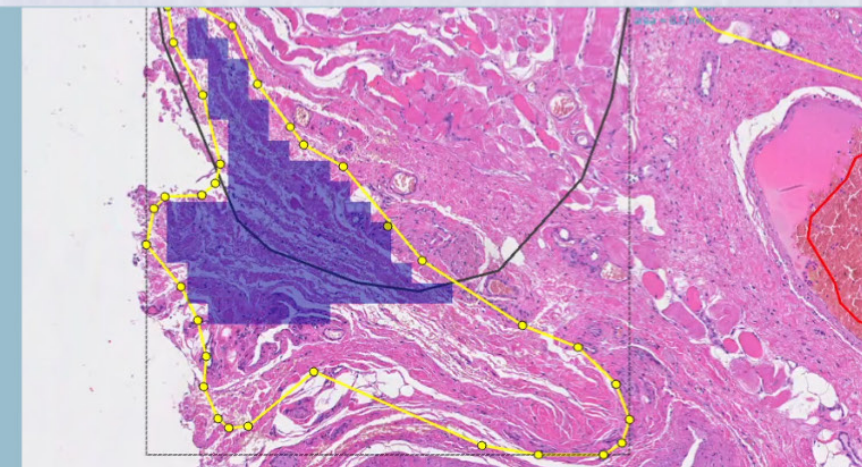
5

The mistake looks plausible. The misclassified red region has a texture similar to the true red region.



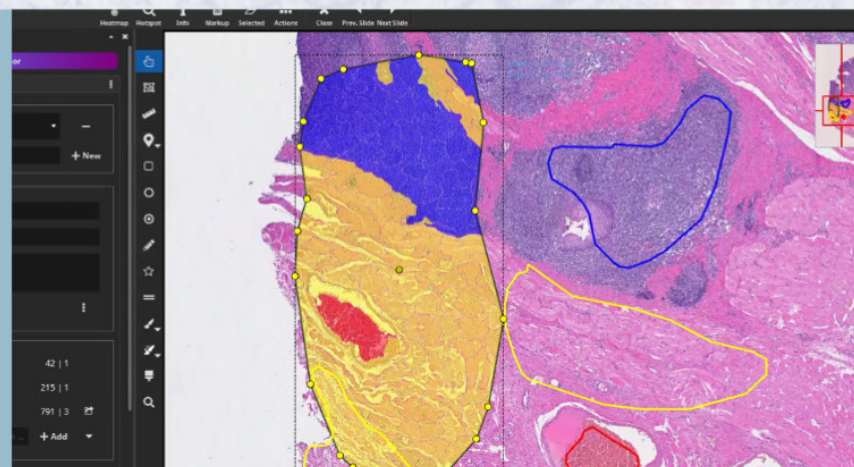
6

Add a new training annotation to teach the AI that the tissue contained in the misclassified area belongs to the yellow class.



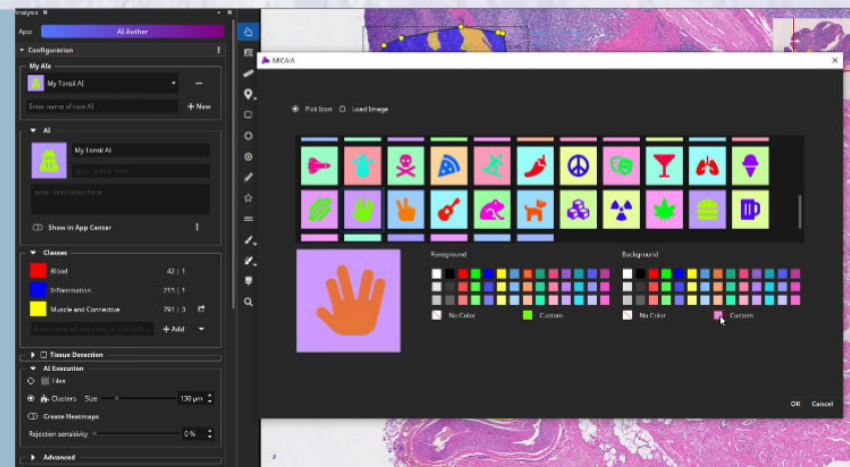
7

Repeat the analysis of the test-ROI. Now the result looks correct. The trained AI is ready to be used now.



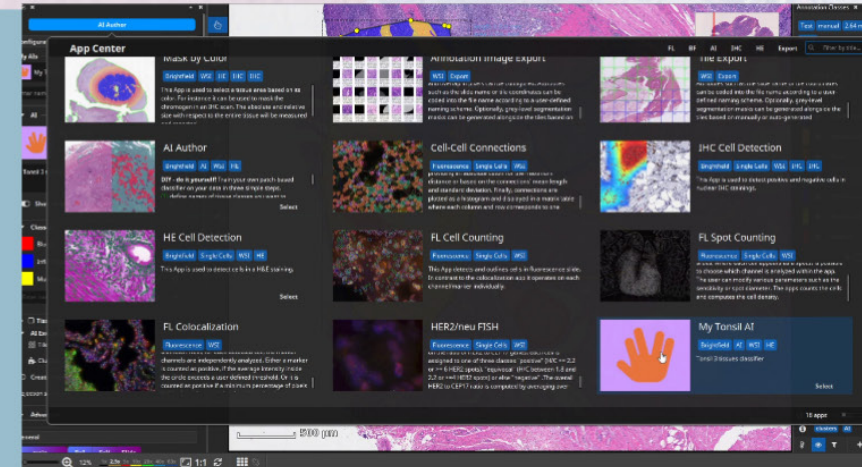
8

Pick an icon, add a description text and enable „Show in App Center“.



9

The trained AI is now available as a new App in the MICAIA App Center. It can also be shared with other MICAIA® users.





# Viewing and Analyzing Immunofluorescent Scans

## Proteomics

Immunofluorescent multi-plex or high-plex slides comprise multiple channels that mark targets such as DNA or proteins. MICAIA® has full support for visualizing plexed slides.

- ✓ Toggle channels on and off (on/off, solo, only others)
- ✓ Configure visualization (levels, gamma, gain, pseudo color) individually for each channel
- ✓ Rendering with 16 bit precision
- ✓ Multiple formats supported (OME-TIFF, Zeiss CZI, Hamamatsu NDPIS)

### 1. Get fast insights: Channel-wise correlation

The correlation module shows an interactive scatter plot for each pair of two channels and sorts them by descending correlation (Pearson's correlation coefficient). This analysis takes < 5 seconds for a whole-slide image scan.

### 2. Cell analysis

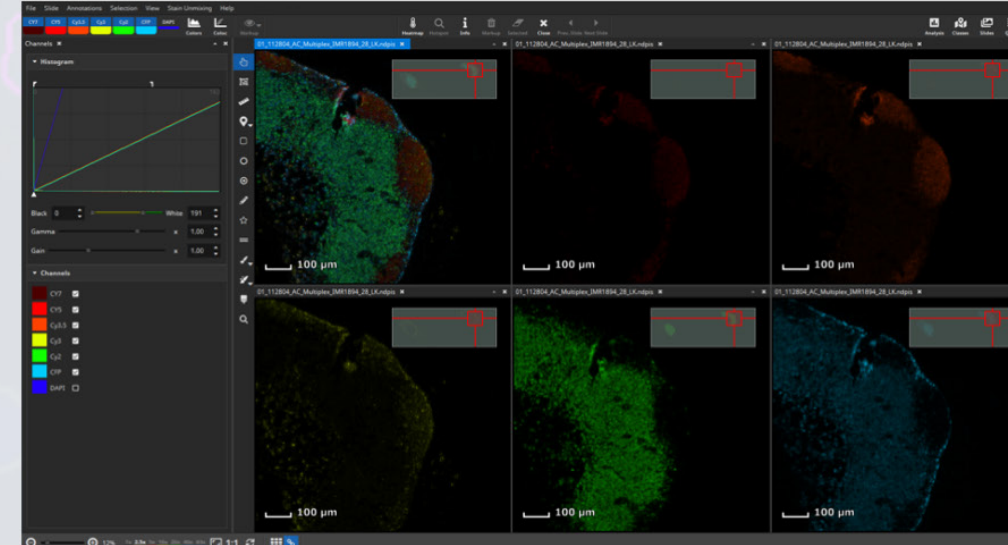
The FL Colocalization App will first detect and outline all nuclei in an ROI or FoV by analyzing the cell marker channel (usually DAPI). Each nucleus annotation is then grown by a user-defined margin to include the cytoplasm. The App will then decide which markers are expressed in each cell. From this, cell phenotypes are derived and visualized in separate annotation classes. The interactive density heatmap can optionally be enabled to show hotspots of certain cell types

### 3. Spatial Analysis

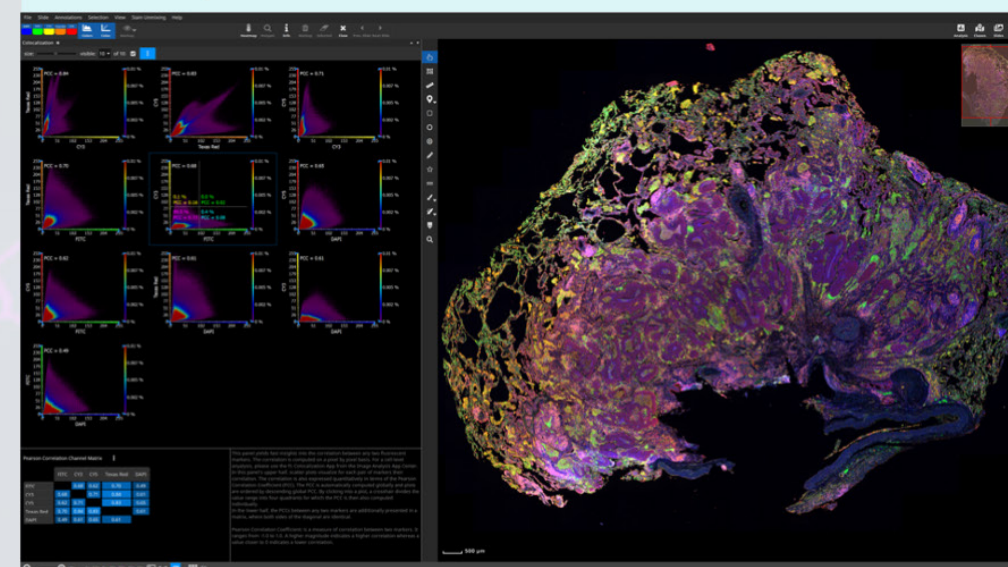
In the next step, the FL Cell-Cell Connections App operates on the classified cell annotation objects and connects each cell to its neighbors. From the resulting graph, various metrics can be derived such as

- Bystander analysis: which cell types are neighbored. "On average, a cell of type A has 2.3 neighbors of type B".
- Proximity analysis: what is the average distance between cell types. "On average, the distance between cell types A and B is  $10.5 \mu\text{m} \pm 2.1$ ".

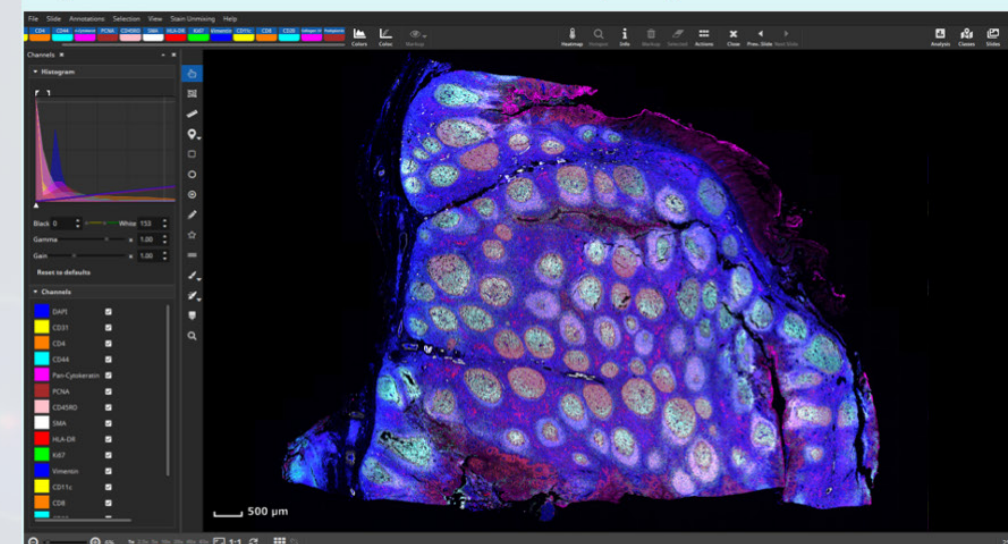
Again, the density heatmap can be enabled and operates on edges (cell connections) to show hotspots where certain cell types are neighbored.



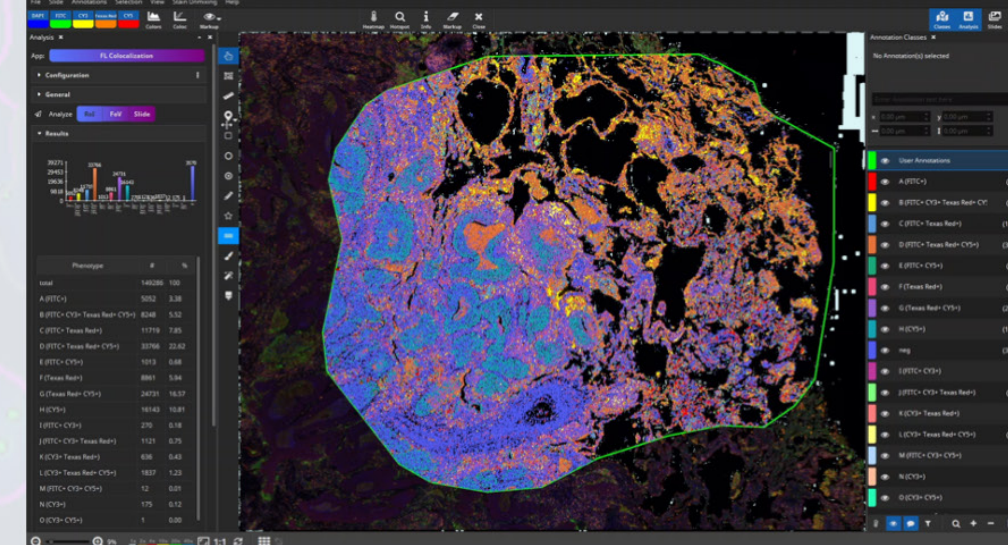
Synchronized **side-by-side** viewing of markers.  
Mouse pointer is mirrored



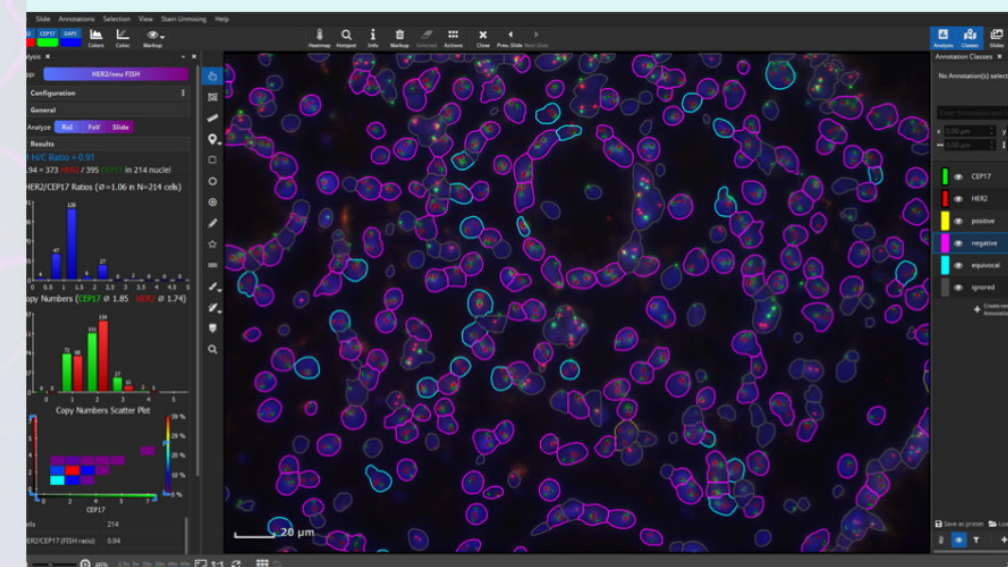
**Correlation** analysis of marker pairs  
(Pearson correlation + scatter plot)



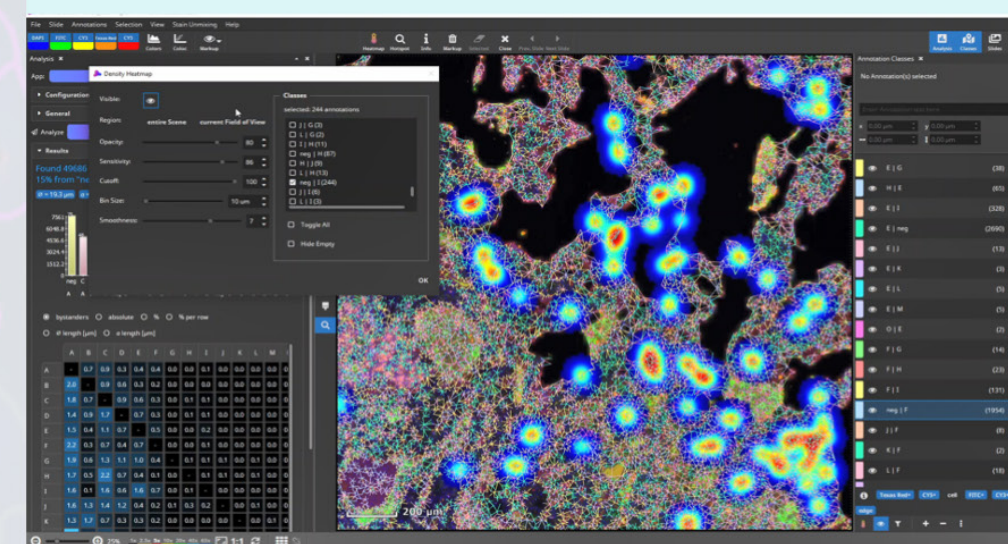
Good support for high-plex **proteomics** scans  
Above: 15-plex Tonsil by Akoya Biosciences



Single cell marker expression with **FL Colocalization App**



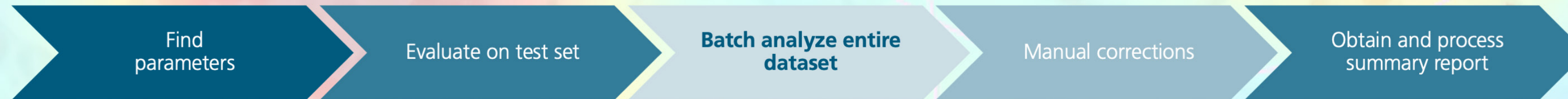
**FISH Spot Analysis App.** Here: HER2/neu



The **Cell-Cell-Connections App** connects cells to their neighbors in a graph.



# Batch Analysis of Multiple WSIs



## 1. Find parameters

Pick a few regions or WSIs in order to experiment with the App settings and find good parameters. Save the parameters as a preset, e.g. “CD3 mouse liver”, so that the parameters can be easily restored throughout the project.

## 2. Evaluate on test set

It is good practice to evaluate the performance (accuracy, time) on a small test set in a quantitative or qualitative fashion. After a successful validation, the analysis can be “rolled out” to the entire dataset.

## 3. Batch analyze entire dataset

A large batch analysis is started simply by loading the folder containing all WSIs into the workspace, selecting them all, and clicking the “Batch” analysis button. One job per WSI (using current App with current settings) will then be added to the job queue and processed one after the other. As soon as a WSI is processed, the WSI results (markup file, CSV spreadsheet, low-res preview images with and without markup) will be written to the result folder.

## 4. Manual Corrections

When you inspect the results by stepping through the analyzed WSIs, you may spot errors, e.g. a cell that should have been picked up, but was missed, or a false cell annotation that should not have counted.

You can simply correct such mistakes by deleting false annotations or adding missing annotations. Afterwards you will want to update the App-specific result CSV files. Simply repeat the batch in “Do not analyze. Load annotations.” mode and obtain an updated set of result files.

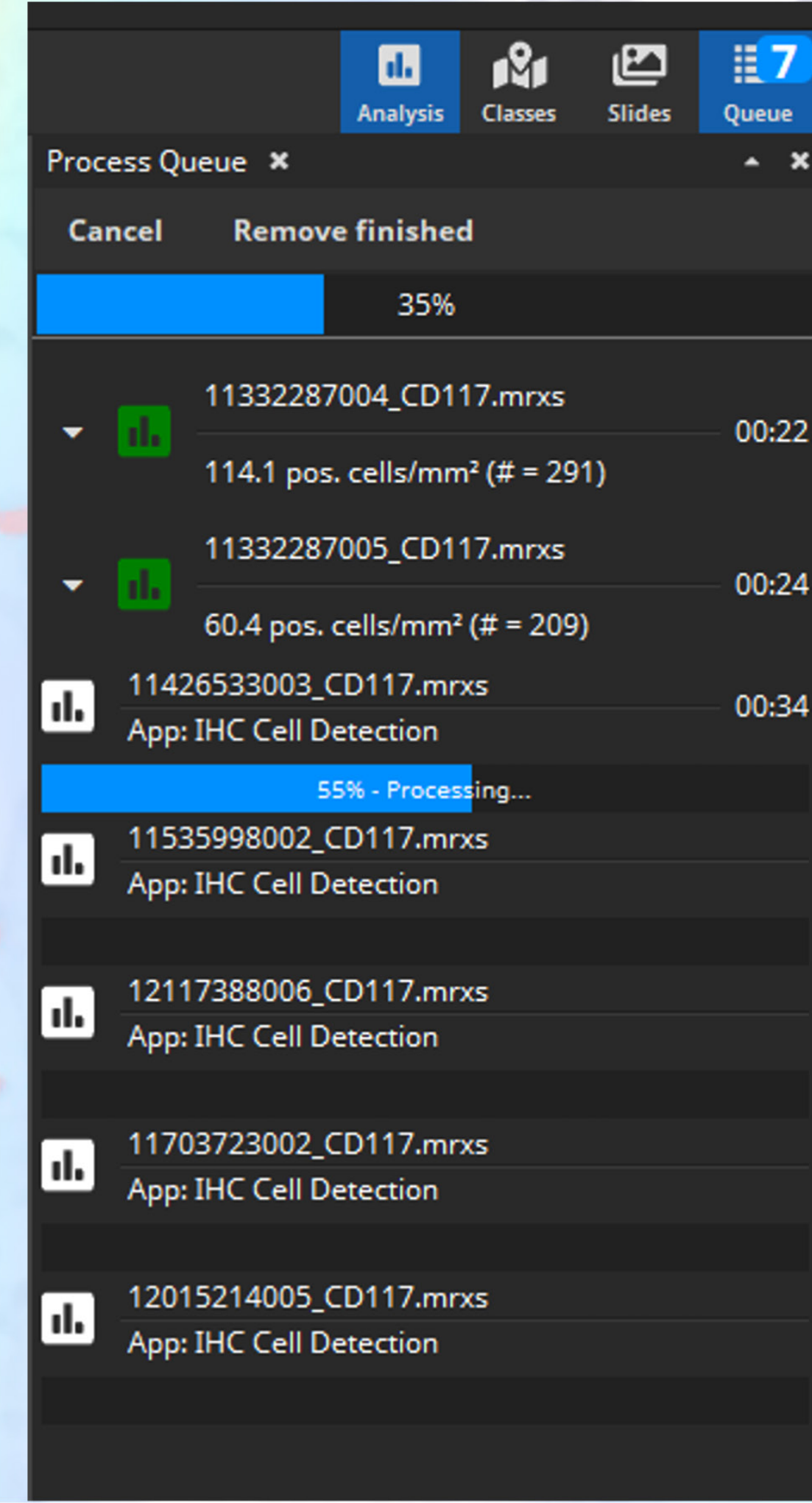
## 5. Obtain and process summary report

As WSIs are processed, a summary CSV file containing all results from all WSIs is continuously updated and stored in the results folder. After the batch has finished, this file will contain all quantitative data. For each WSI, it contains rows for different “entities”:

- for each cell
- summary for each ROI, for each class and for the entire WSI

In other words, it contains both the row data (e.g. location, size and mean intensity for each single cell) and summary statistics. The granularity is modifiable by only showing rows of a certain type and hiding all other rows.

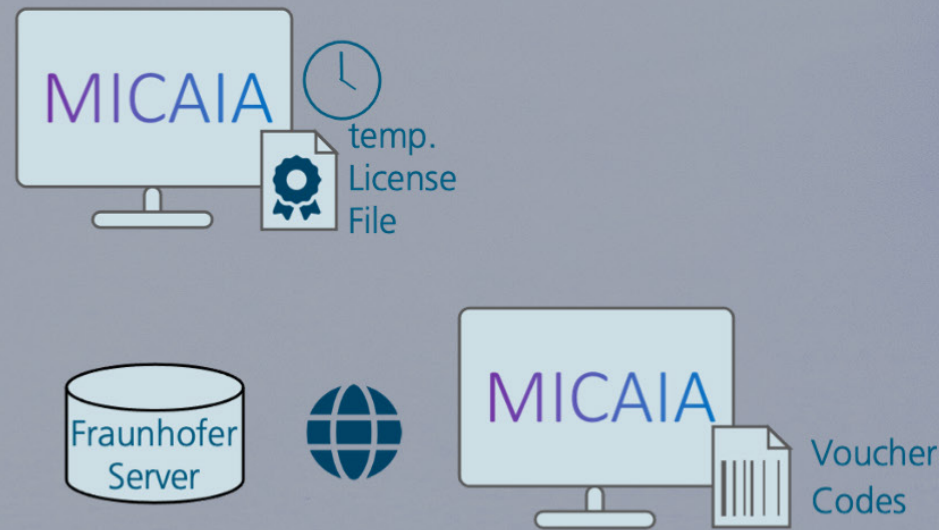
The CSV file can be simply opened with Microsoft Excel, but is structured in a way that it can also be easily imported into other statistics tools such as R, Python or Matlab. In this way, researchers can use their favorite tool to correlate the quantitative MICAIA® output with clinical data or create custom plots.



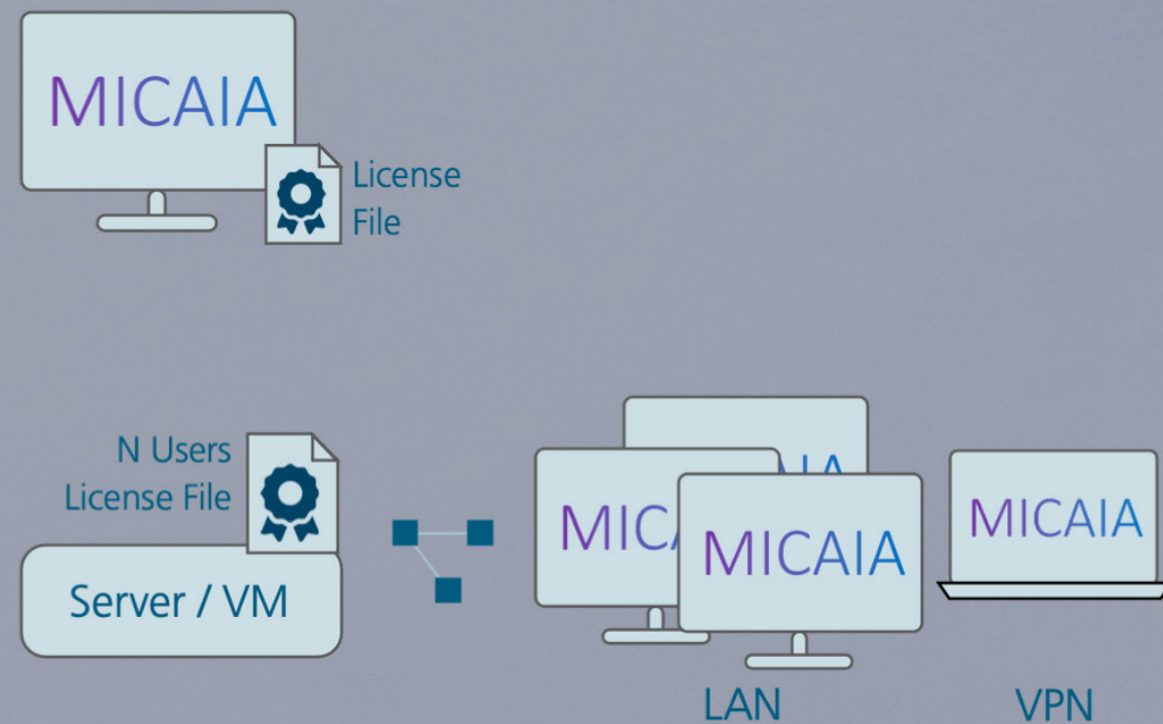


# Evaluation & Activation

## Evaluation



## Permanent Activation



## Evaluation

### Temporary license file

Same as „Activation with node-locked license“, except that MICAIA® is only temporary unlocked.

### Voucher codes

1. Download MICAIA® from [www.micaia.ai](http://www.micaia.ai) and install.
2. Import voucher codes.
3. One voucher is consumed for each execution of an App (requires Internet connection.)

### Node-locked single-user license

1. Download MICAIA® from [www.micaia.ai](http://www.micaia.ai) and install.
2. Create license request file. It contains the computer's unique fingerprint.
3. Receive an activation file and import it into MICAIA®. MICAIA® is now unlocked.

The name changes from **MICAIA® lite** to **MICAIA® studio**.

## Permanent Activation

### Floating or multi-user license

#### Server installation

1. Download MICAIA® from [www.micaia.ai](http://www.micaia.ai) and install it on server (can be a VM).
2. Create license request file. It contains the server's unique fingerprint.
3. Receive an activation file and import it into MICAIA®.
4. Open CodeMeter Control Center, open WebAdmin, enable „Server“ to make the server discoverable from other computers.

#### Client Installation

Download MICAIA® onto any client computer and install it.

If client and server are in the same LAN, client will auto-detect server and MICAIA® will be auto-magically unlocked right away.

If client is connected via VPN (e.g. in home office), open Codemeter WebAdmin and add the server name or IP to the server search list first. If the server license permits 10 parallel users, the first 10 users can start MICAIA® studio on their computer. The 11th will get a notice that all slots are in use.



# Hardware Requirements

MICAIA® is a Windows Software that runs locally on your computer.



## Keep your data in safe hands – in yours!

Bring AI to the data, not data to the AI.

WSIs are often larger than 1 GB. Uploading this data to the cloud can take a long time and require a lot of expensive cloud disk space.

Instead, analyze your data locally and load WSIs into MICAIA® directly from your network or local folder

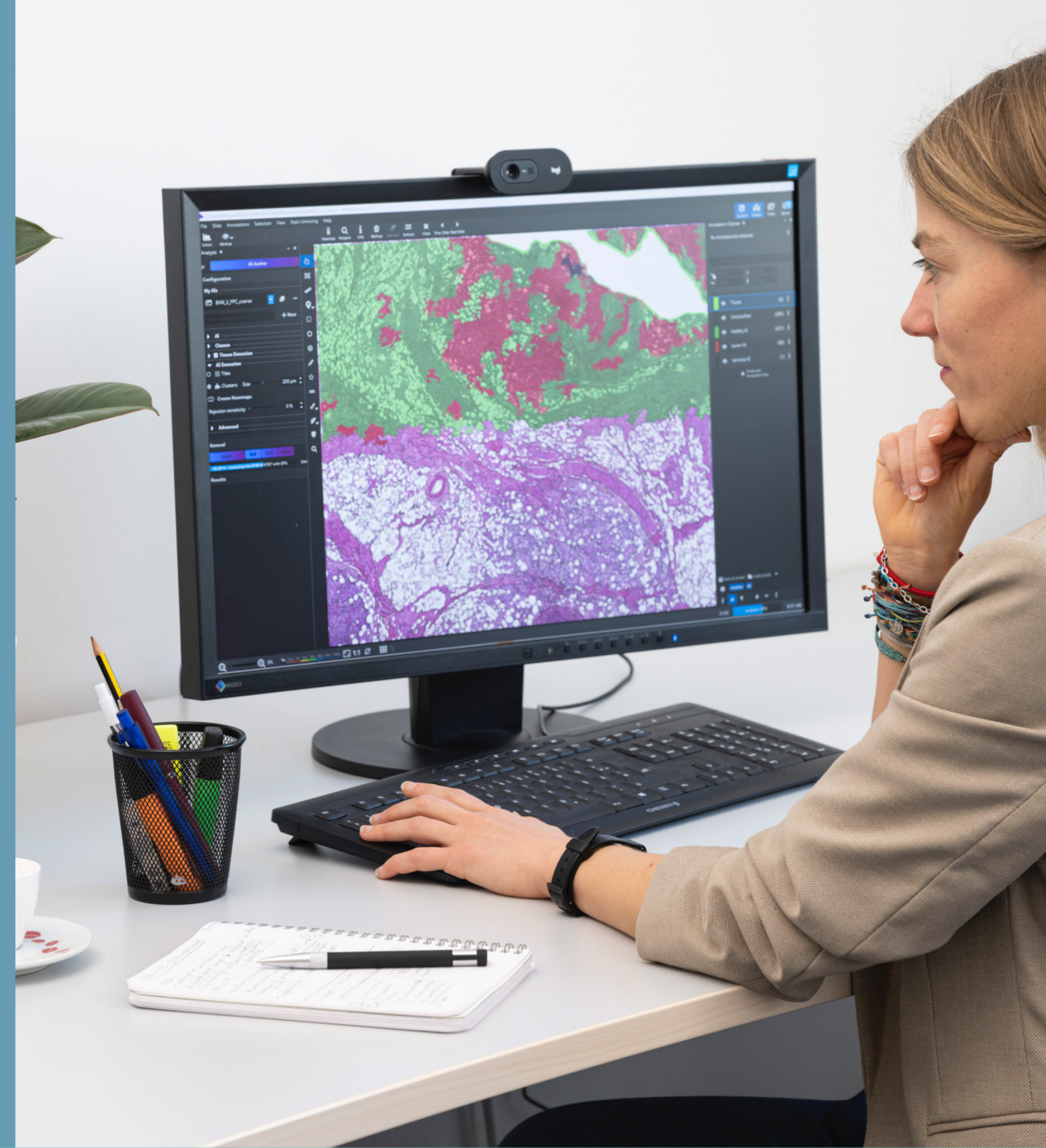


## Easy Installation – start in less than a minute

You can simply download MICAIA® from [www.micaia.ai](http://www.micaia.ai).

Start using it right away. No need to wait for a technician to set up an on-site server, which would also entail involvement of your local IT department. MICAIA® is available as

- a regular installer or
- a portable version (zip file, no admin rights required)







free Download of MICAIA® lite:  
[www.micaia.ai](http://www.micaia.ai)



Distributors:  
[www.smartinmedia.com/micaia](http://www.smartinmedia.com/micaia)



[www.benestartech.com/micaia](http://www.benestartech.com/micaia)



Questions, Discuss your Project, Quotation, ...  
[micaia@iis.fraunhofer.de](mailto:micaia@iis.fraunhofer.de)



[Fraunhofer IIS at LinkedIn](#)



[MICAIA® YouTube Playlist](#)